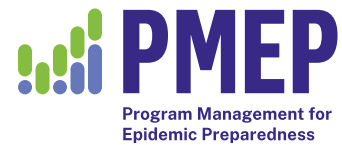


# PROGRAM MANAGEMENT FOR EPIDEMIC PREPAREDNESS



**Strengthening health security through shared learning and peer exchange**

## Challenge

International Health Regulations (IHR) systems strengthening is complex. Effectively leveraging funding for pandemic preparedness and response (PPR) involves navigating a labyrinth of technical, operational, and political complexities. Government officials who work on strengthening epidemic preparedness have limited opportunities for shared, practical learning on strategies to advance technical, operational and political issues, yet success hinges on the capabilities of these leaders to establish effective multisectoral governance and quality improvement systems.

## Solution

**Establish a model for learning and peer exchange that enables government officials to grow their practical knowledge and leadership skills, engage peers and facilitate systems change.**

Program Management for Epidemic Preparedness (PMEP) is a leadership and management program launched in 2019 by Resolve to Save Lives (RTSL) that, to date, has trained over 200 health security leaders from 20 countries. PMEP equips mid-to senior-level leaders to address critical barriers to preparedness and improve absorption of pandemic preparedness and response (PPR) funding by:

- Integrating foundational concepts in health security and health systems strengthening with leadership and management skills
- Offering practical, experiential learning to better design, manage and prioritize investments
- Providing a platform to share lessons and expertise in a peer-led community of global preparedness leaders






## 5-year summary of progress

### Building individual, team and institutional capabilities

- Trained over 200 leaders from across 20 countries in Africa and the Eastern Mediterranean region
- Delivered quality, integrative and practical programs to address specific technical, operational and political bottlenecks
- Partnered with World Bank, World Health Organization, USCDC, Africa CDC to mutually reinforce approaches
- Further results pending conclusion of 2024 PMEP program study

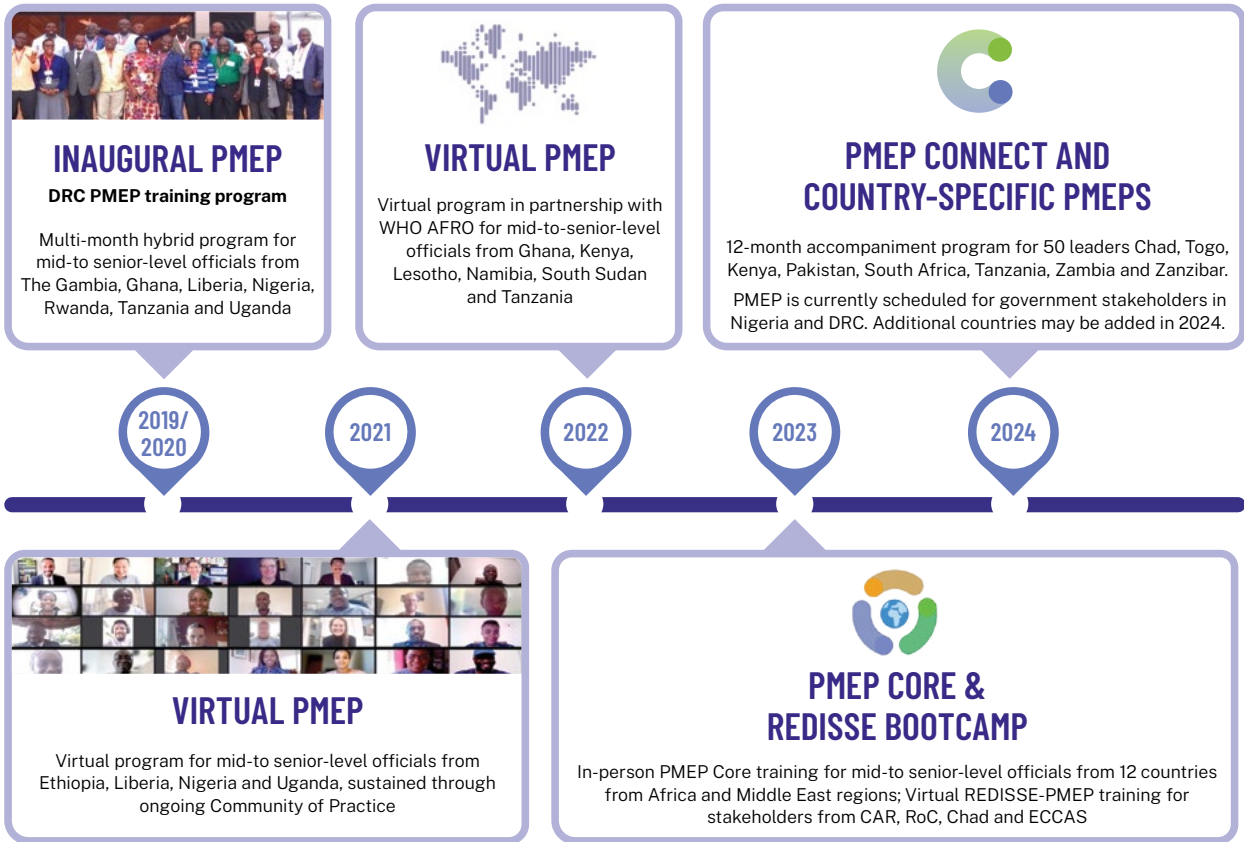


## PMEP Theory of Change

OUTPUTS			OUTCOMES		IMPACT
IMMEDIATE	INTERMEDIATE	HIGHER-LEVEL	IMMEDIATE	INTERMEDIATE + HIGHER -LEVEL	
 <p>PMEP Core and Connect for mid- to senior-level health security officials</p>	<ol style="list-style-type: none"> <li>Improved political will for preparedness</li> <li>Established and functional NAPHS coordination team</li> <li>Established and functional NAPHS tracker</li> <li>Integrated timeliness metrics into annual planning</li> <li>Streamlined EPPR partnerships and improved financial management</li> <li>Well-prioritized, fully costed and implemented annual plans</li> </ol>	<ol style="list-style-type: none"> <li>Leaders working in NAPHS implementation equipped with management and leadership skills</li> <li>Institutionalization of program management components and learnings from PMEP in NAPHS implementation work</li> <li>Effective cross-country learning and knowledge sharing</li> </ol>	Improved NAPHS development & implementation	Improved EPPR capacities and capabilities	Improved country-level preparedness to find and stop outbreaks
INDICATORS	Tracked as part of RTSL's ongoing PMEP program study		JEE/SPAR scores		Decreased morbidity & mortality from outbreaks



## History of PMEP



## PMEP Connect

### Bridging technical and organizational capabilities

PMEP Connect is a 12-month virtual accompaniment program (Jan-Dec 2024) for 50 leaders from 8 countries who completed the 2023 in-person PMEP Core training and submitted successful applications demonstrating their commitment to strengthening epidemic preparedness. As part of PMEP Connect, the 8 participating countries--Chad, Togo, Kenya, Pakistan, South Africa, Tanzania, Zambia and Zanzibar have access to the following--resources and learning opportunities.

<p><b>Catalytic funding</b></p> <p>\$25k to support improved NAPHS coordination / implementation</p>	<p><b>Learning series</b></p> <p>Instructor-led interactive training sessions focusing on leadership and technical skill building</p>	<p><b>Collaboration calls</b></p> <p>Routine opportunities for country teams and RTSL to discuss planning and strategy, implementation updates and problem-solving</p>	<p><b>Virtual country peer exchange</b></p> <p>Country teams engage with and support other members of the PMEP Network (including alumni countries)</p>	<p><b>RTSL support visit</b></p> <p>RTSL provides in-person support for a country-level PMEP training or NAPHS-related convening</p>	<p><b>Twinning visit</b></p> <p>≤ 2 country team members can travel to an RTSL country or PMEP Connect country to learn from and support their colleagues</p>
--	---	--	---	--	---